

Wine Island Growers Association: 12 March 2011

Disease Management: Dealing with Botrytis in Wet Climates

Dr. Michelle M. Moyer
Asst. Prof.- Viticulture Extension
WSU-IAREC
Email: michelle.moyer@wsu.edu



OVERVIEW

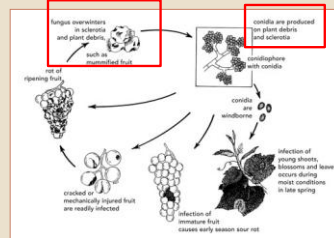
- Noble Rot vs. Bunch Rot
- Botrytis Biology
 - Disease development/cycle
 - Research (past and present)
- Disease Management
 - Cultural Practices
 - Traditional options
 - Organic options

NOBLE ROT vs. BUNCH ROT

- A rot by any other name does not taste as sweet...
- Noble Rot (Sauternes, trockenbeerenauslese)
 - Late, light infections help dehydrate, impart honey flavors.
 - Dry conditions during ripening
- Bunch Rot
 - Early infections lead to rot of entire cluster, introduction of other organisms
 - Wet conditions during ripening

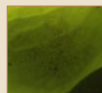
BIOLOGY-DISEASE CYCLE

- Notice the simplicity.....



BIOLOGY-THE BASICS

- Temperature preference: 11.7-30° C (optimum 18-21° C)
- Needs 1.5 hrs of "leaf wetness"
 - (likes damp conditions)
- A weak pathogen
 - Grows everywhere on dead or dying tissue
 - Infects through injuries/openings
 - PM can enhance BR



BIOLOGY-THE WITHIN CLUSTER SPREAD

- Spreads via touching berries
- Longer hang-time = more time for increased infection
 - Use judgment for harvest dates
 - What are the weather conditions going to be?
- Cannot eradicate once established, can only slow the spread

BIOLOGY-THE WITHIN CLUSTER SPREAD



BIOLOGY-VEGETATIVE TISSUE ATTACK

- Botrytis can occasionally cause flower, leaf and shoot blight
 - Generally in VERY wet years
 - On excessively vigorous vines (control nitrogen levels)



Photos courtesy of www.wsu.edu

BIOLOGY-RESEARCH UPDATES

- Sprayer Technology: Fruit zone-directed
- Latent infections:
 - Triggers of sporulation
 - PCR testing for diagnostics
- Not a major research focus
 - Variable epidemics
 - Not usually a primary disease

**Disease Management:
Botrytis Bunch Rot**



DISEASE MANAGEMENT- CULTURAL PRACTICES

- Drip vs. mist vs. overhead irrigation
- Canopy manipulation can help!
- Reduce humidity, reduce drying time
- Ways to do this:
 - Managing canopy vigor
 - Shoot thinning (canopy density)
 - Leaf pulling- timing and amounts

Open Canopy= Better spray deposition + air circulation + light penetration


DISEASE MANAGEMENT- CULTURAL PRACTICES

- Leaf Pulling
 - Directed at the fruiting zone
 - Previous practice was from set – veraison
 - Current research focuses on prebloom-set
- CAUTIONS
 - Leaf pulling late can cause sunburn
 - Costly
 - Too much leaf removal too early can reduce set

WASHINGTON STATE UNIVERSITY
EXTENSION

VITICULTURE AND ENOLOGY

DISEASE MANAGEMENT-CULTURAL PRACTICES




02/11/2009

Photo courtesy of Dr. Craig Austin


WASHINGTON STATE UNIVERSITY
EXTENSION

VITICULTURE AND ENOLOGY

DISEASE MANAGEMENT- CULTURAL PRACTICES



Shoot thinning, positioning, and general canopy management are also crucial




If you can't see the fruit zone, neither can a sprayer...

WASHINGTON STATE UNIVERSITY
EXTENSION

VITICULTURE AND ENOLOGY

DISEASE MANAGEMENT- SUSCEPTIBILITY

- Judging vine susceptibility for Botrytis bunch rot is not easy.
- Usually based on:
 - Cluster architecture and compactness
 - Tendency to swell and split
 - Powdery mildew susceptibility
 - Insect and animal feeding preference



WASHINGTON STATE UNIVERSITY
EXTENSION

VITICULTURE AND ENOLOGY

DISEASE MANAGEMENT- SUSCEPTIBILITY

Susceptible	Moderately Susceptible	Low Susceptibility
Chardonnay, Chenin blanc, Vignoles, Grenache, Pinot noir, Pinot gris, Riesling, Sauvignon blanc, Traminer, Barbera, Grenache, Petite syrah, Zinfandel, Seyval blanc, Baco noir, Semillon*, Cabernet sauvignon*, Cabernet franc*	Semillon*, Sangiovese, Vidal blanc	Cabernet sauvignon*, Merlot, Cabernet franc*

The problem with generalizations...

Question:
What should you consider when selecting clones?

WASHINGTON STATE UNIVERSITY
EXTENSION

VITICULTURE AND ENOLOGY

DISEASE MANAGEMENT- MONITORING INFECTIONS

- Sample green and coloring clusters (~15-30)
- Place in a wet plastic bag; seal
- Freeze/incubate at room temperature
- Clusters with Botrytis infections will show sporulation in 1-3 days
 - Incidence and severity will vary
 - If more than 1/3 of bunches in sprayed* vineyard are sporulating, contact extension agent

WASHINGTON STATE UNIVERSITY
EXTENSION

VITICULTURE AND ENOLOGY

DISEASE MANAGEMENT- FUNGICIDE CHOICES

Class	Trade Name	Common Name	Resist. Risk	Type
Anilinopyrimidine	Vanguard	Cyprodinil	High	Protectant/postinfec.
Anilinopyrimidine	Scala	Pyrimethanil	High	Protectant/postinfec.
Dicarboximide	Rovral	Iprodione	High	Protectant/postinfec/antispor.
Strobilurin/carboxin	Pristine	Pyraclostrobin/boscalid	High	protectant/antispor.
Strobilurin	Flint	Trifloxystrobin	High	Protectant; higher rate than for PM
Carboxin	Endura	Boscalid	High	Protectant/postinfec; higher rate than PM
Hydroxalanilide	Elevate 50WDG	Fenhexamid	Mod.	Protectant; some PM control, limit sprays

WASHINGTON STATE UNIVERSITY EXTENSION VITICULTURE AND ENOLOGY

DISEASE MANAGEMENT- DUAL FUNGICIDES

Class	Trade Name	Common Name	PM Rate (oz/A)	Bunch Rot Rate (oz/A)
Strobilurin/ carboxin	Pristine	Pyraclostrobin / boscalid	1.5- 2.0	3.0
Strobilurin	Flint	Trifloxystrobin	8.0- 10.5	12.5

USE CAUTION- RESISTANCE AND RATES MATTER

Courtesy of Dr. Wayne Wilcox, Cornell University-NYSAES

WASHINGTON STATE UNIVERSITY EXTENSION VITICULTURE AND ENOLOGY

Generalized Spray Program:

Botrytis Bunch Rot

WASHINGTON STATE UNIVERSITY EXTENSION VITICULTURE AND ENOLOGY

DISEASE MANAGEMENT- GENERAL SPRAY PROGRAM

- Latent Infections:
 - Infections here are not expressed until veraison
 - Infects through stamens/scars
 - Bloom spray at cluster zone
 - Monitor weather conditions

WASHINGTON STATE UNIVERSITY EXTENSION VITICULTURE AND ENOLOGY

DISEASE MANAGEMENT- GENERAL SPRAY PROGRAM

- Fruit Rot
 - Latent infections expressed
 - New infections on ripening clusters
 - Infections spread quickly within cluster
 - Monitor weather
 - Spray at first signs (do not wait!)

WASHINGTON STATE UNIVERSITY EXTENSION VITICULTURE AND ENOLOGY

REVIEW and CONCLUSIONS

- Biology and history
- Implications in viticulture and enology
 - Nobel Rot
 - Bunch Rot
- Managing outbreaks in cool, wet climates
 - Focus of spray programs
 - Viticultural practices

WASHINGTON STATE UNIVERSITY EXTENSION VITICULTURE AND ENOLOGY

WEBSITES

- Washington State University
 - www.wine.wsu.edu/research-extension/
- Oregon State University
 - www.ipmnet.org
- Cornell University
 - www.nysaes.cornell.edu
- Ontario Ministry of Ag.
 - www.omafra.gov.on.ca/
- BC Ministry of Ag.*
 - www.agf.gov.bc.ca

QUESTIONS?

http://www.agf.gov.bc.ca/cropprot/grapeipm/grape_pesticides.pdf

